

WHIRLPOOL VANCOUVER



ELITE SERIES
MODEL PE65 I
215 X 165 X 86 cm



Underwater Spotlight



Spa Touch Display



Waterline Lighting



Ozonator



Wave Select Cabinet



UV Desinfection



WATERWAVE SPAS®

www.waterwave-spas.com

WHIRLPOOL VANCOUVER ELITE SERIES



TECHNICAL DATA Dimensions: 215 x 165 x 86

cm	
Empty weight:	290 kg
Water capacity:	850 l
Total weight:	1.140 kg
Cabinet color:	see overview
Shell color:	see overview
Cabinet:	WPC Cabinet

DETAILS

Seats:	1
Lounges:	2
Water jets:	46
Feet massage:	included
Neck massage:	included
Isolation:	Xtreme Isolation
Framework:	Stainless steel frame
Controller:	Balboa
Control panel:	Spatouch
Single Control Button:	optional
Water pump:	1 x 3 HP 2-level + 1 x 3 HP 1-level
Circulation pump:	Silent Wave Eco
Ozonator:	included
UV disinfection:	included
Filter:	1 x lamella filter
Water drain:	included
Heating:	3 KW Balboa
Electrical requirements:	3 phases 16 Ampere, 400 Volt

LED LIGHTING

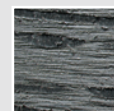
LED waterline:	included
LED underwater spotlight:	included
LED corner light:	depending on model
LED ambiente licht:	depending on model
Waterfall:	Wave Design
Handle:	included

OPTIONAL

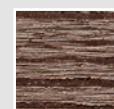
- Waterwave Sound System
- Waterwave Select Cabinet
- WiFi Control System
- Hydrospeed Massage
- Waterwave Clear Saltsystem
- Preparation of external access (e.g. air/heat pump)

PREMIUM CABINET

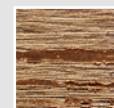
Wave Select Cabinet



Dark Grey

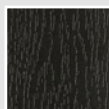


Moccha

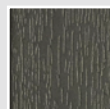


Light Oak

CABINET COLOR STANDARD



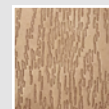
Black



Dark Grey



Light Grey



Dark Brown

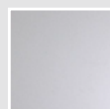
SHELL COLOR



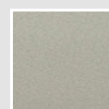
Pure White



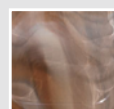
Silver Marble



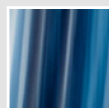
White Pearl



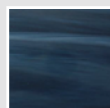
Gypsum



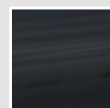
Mediterr. Sunset



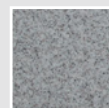
Ocean Wave



Summer Sapphire



Midnight Opal



Sahara