

WHIRLPOOL LINCOLN



GOLD SERIES
MODEL G3100
230 X 230 X 92 cm

underwater spotlight



ozonator



foot & neck massage



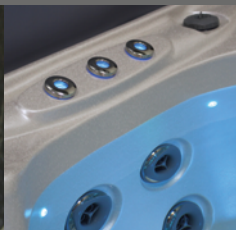
waterline lighting



Xtreme isolation



high quality jets



WATERWAVE SPAS®

www.waterwave-spas.com

WHIRLPOOL LINCOLN GOLD SERIES



TECHNICAL DATA

| | |
|-----------------|-------------------|
| Dimensions: | 230 x 230 x 92 cm |
| Empty weight: | 380 kg |
| Water capacity: | 1.558 l |
| Total weight: | 1.938 kg |
| Cabinet color: | see overview |
| Shell color: | see overview |

LED LIGHTING

| | |
|---------------------------|----------|
| LED underwater spotlight: | included |
| LED waterline: | included |
| Waterfountains: | included |

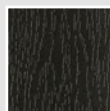
DETAILS

| | |
|--------------------------|------------------------------|
| Seats: | 5 |
| Lounges: | 1 |
| Water jets: | 53 |
| Feet massage: | included |
| Neck massage: | included |
| Isolation: | Xtreme Isolation |
| Framework: | Stainless steel frame |
| WPC paneling: | included |
| Controller: | Balboa |
| Control panel: | TP600 |
| Water pump: | 2 x 3 HP I-level |
| Circulation pump: | included |
| Ozonator: | included |
| Filter: | 2 x lamella filter |
| Water drain: | included |
| Heating: | 3 KW Balboa |
| Electrical requirements: | 3 phases 16 Ampere, 400 Volt |

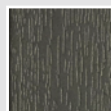
OPTIONAL

- Airblower including aromatherapy (up to 12 additional air jets)
- Waterwave Sound System
- UV disinfection

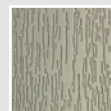
CABINET COLOR



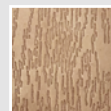
Black



Dark Grey



Light Grey



Dark Brown

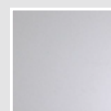
SHELL COLOR



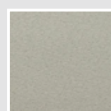
Pure White



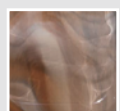
Silver Marble



White Pearl



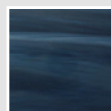
Gypsum



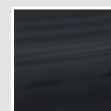
Mediterranean Sunset



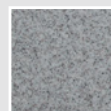
Ocean Wave



Summer Sapphire



Midnight Opal



Sahara